

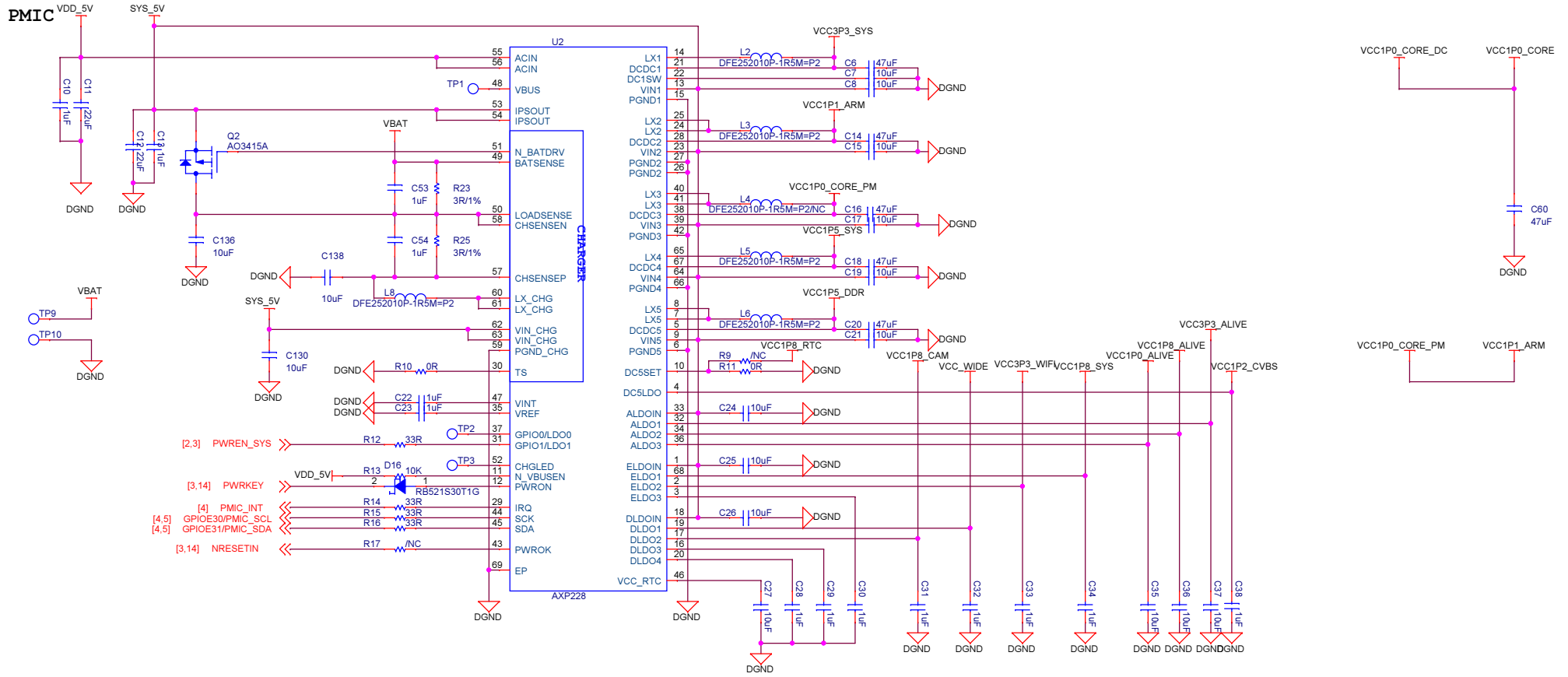
# NanoPi M2

Revision

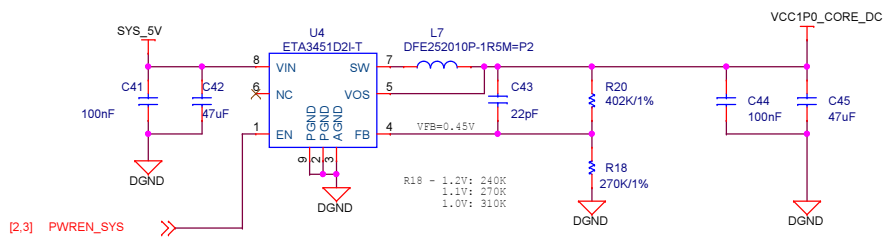
1602 , First Release

**FRIENDLYARM**

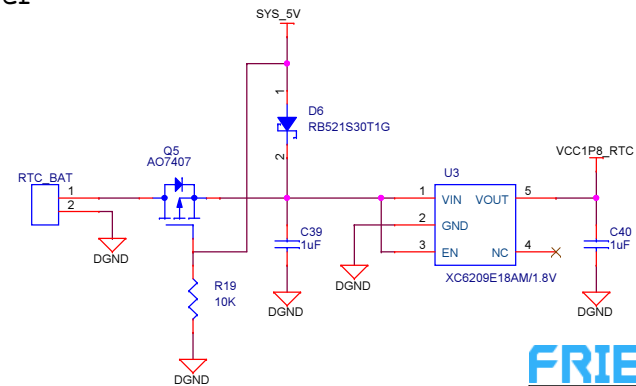
NanoPi M2		
Size A3	Document Number 01.Title	Rev 1602
Date:	Thursday, February 25, 2016	Sheet 1 of 14



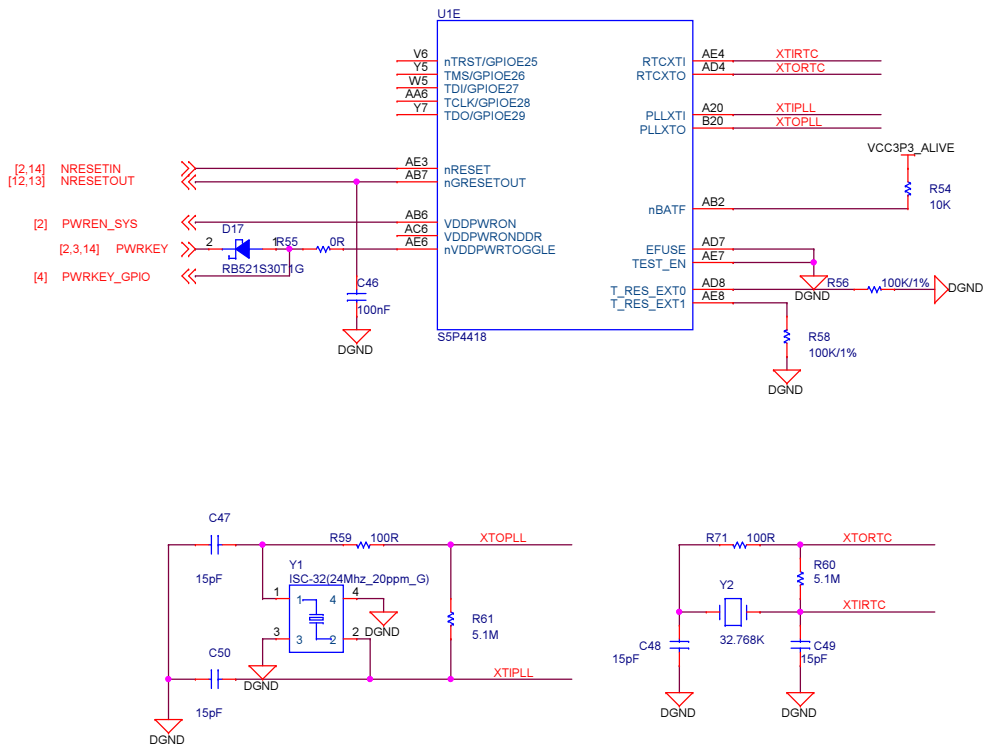
**VCC1P0\_CORE: 1.12V**



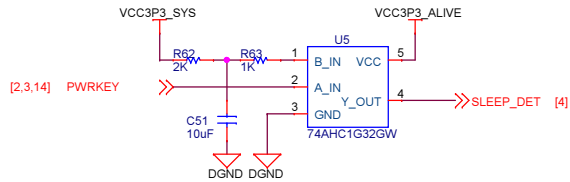
**RTC Power**



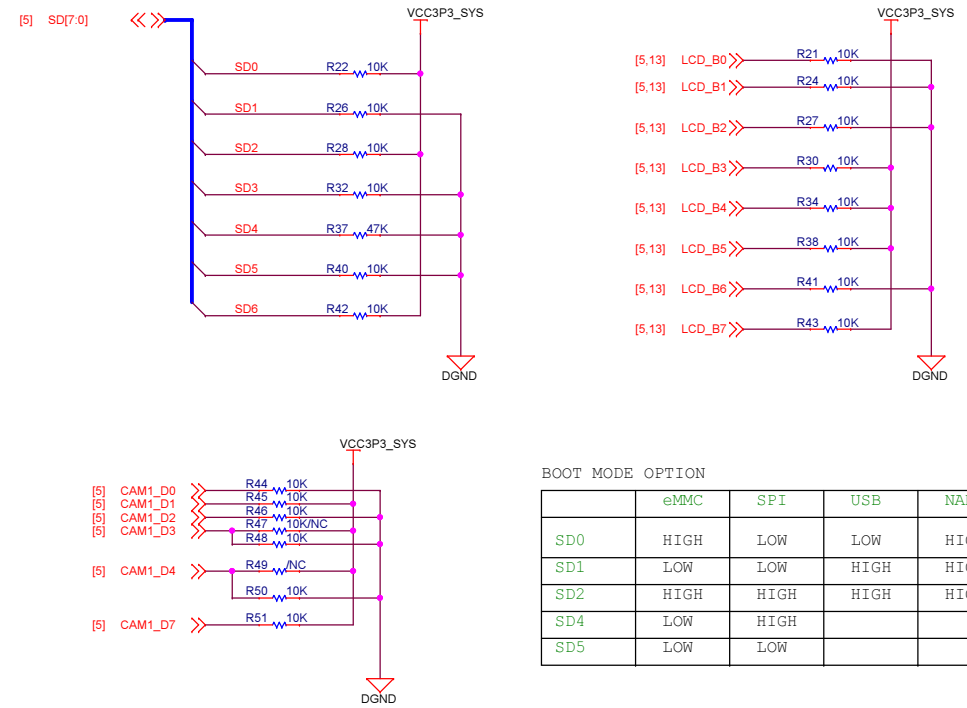
## System Reset, Clocks



## Sleep Detect



## Boot Mode Config



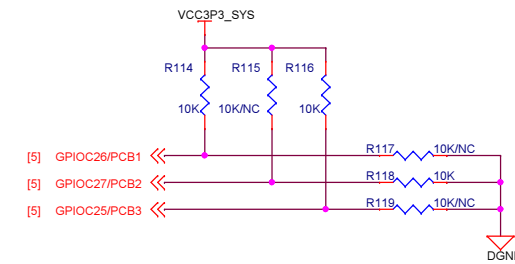
### BOOT MODE OPTION

	eMMC	SPI	USB	NAND
SD0	HIGH	LOW	LOW	HIGH
SD1	LOW	LOW	HIGH	HIGH
SD2	HIGH	HIGH	HIGH	HIGH
SD4	LOW	HIGH		
SD5	LOW	LOW		

### Boot media port select (SPI, eMMC)

	CH0	CH1	CH2
SD3	LOW	HIGH	LOW
CAM1_D3	LOW	LOW	HIGH

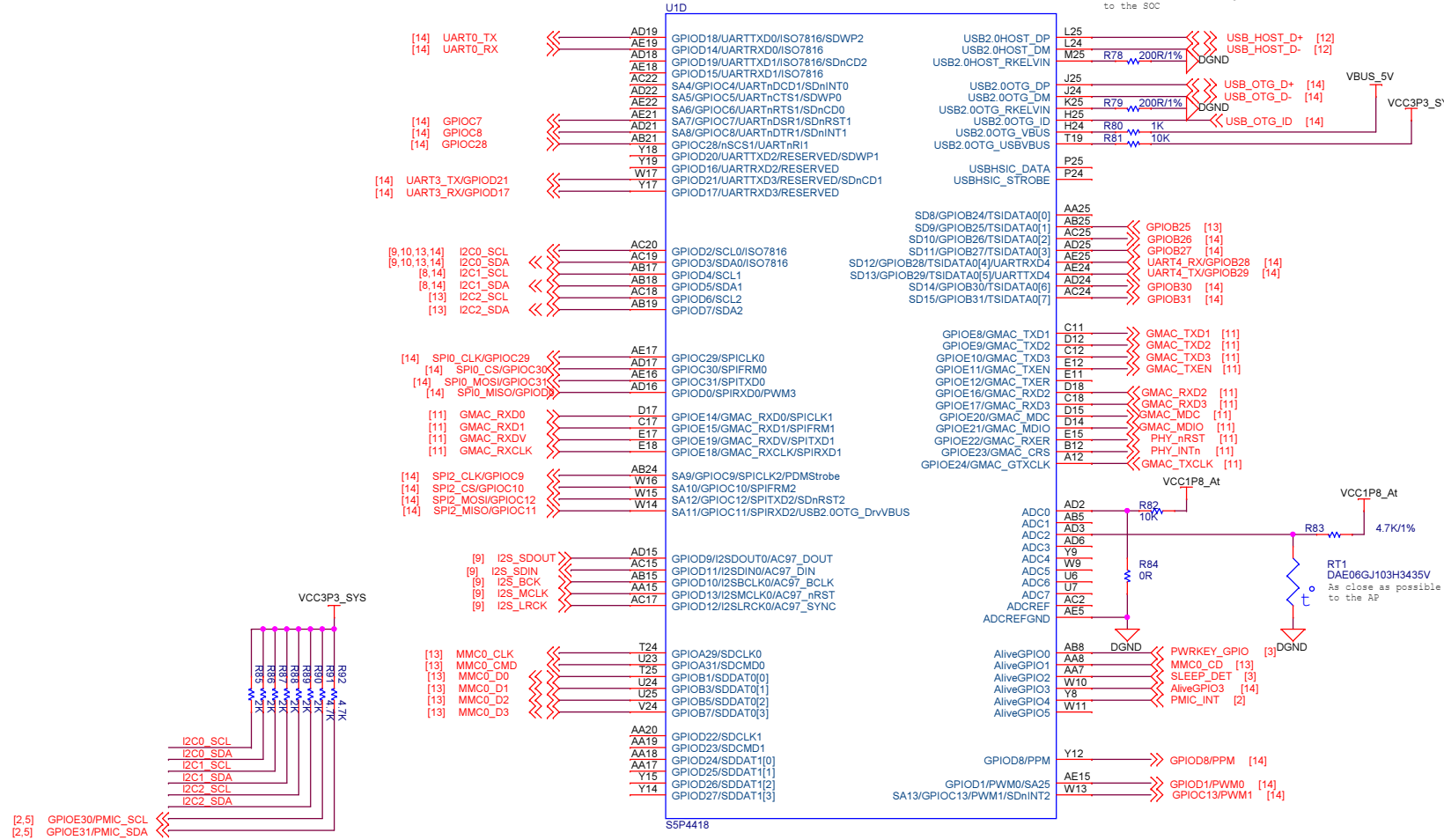
## PCB Version



**FRIENDLYARM**

# AP Peripherals

R78,R79 is as close as possible to the SOC



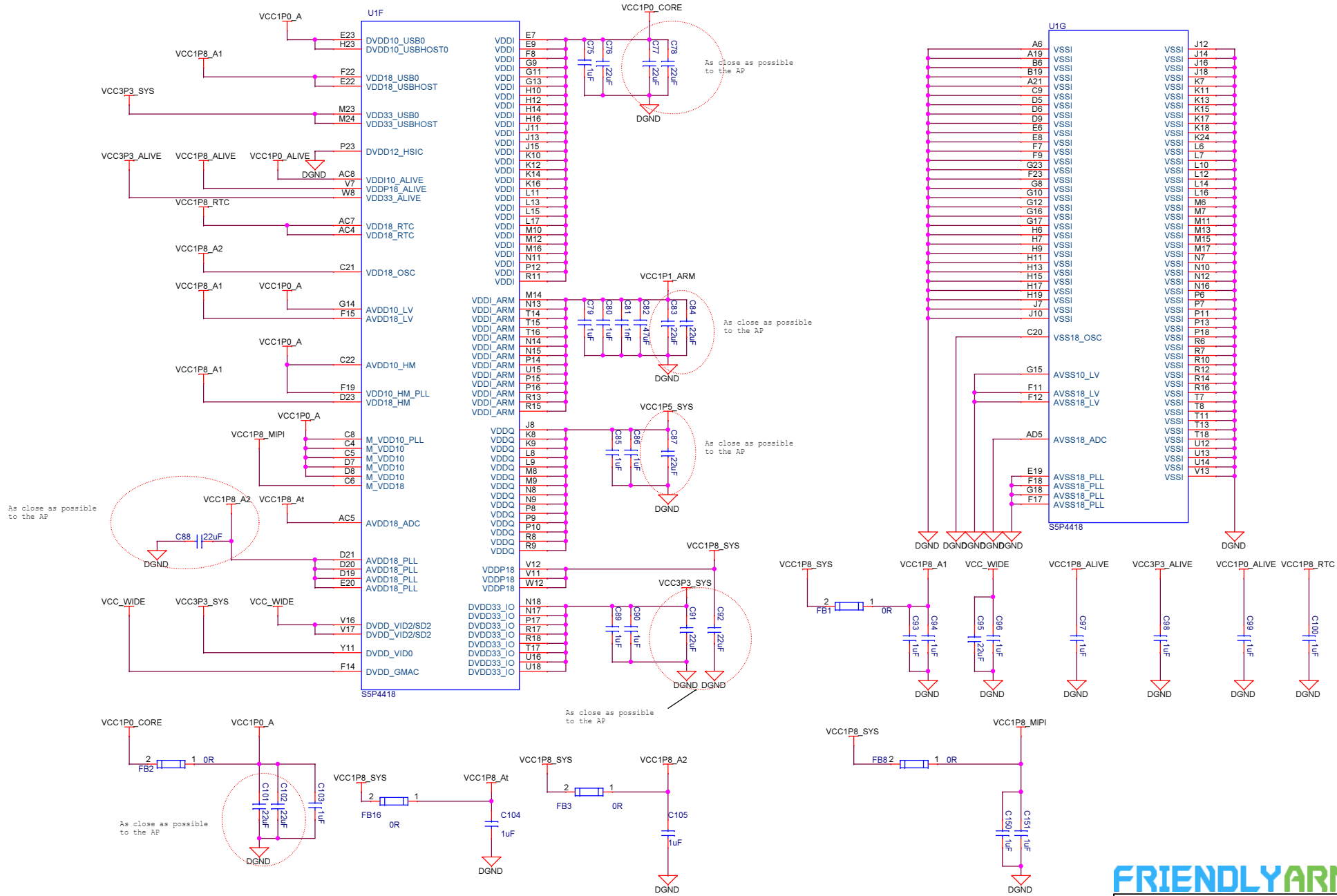
I2C CH0 : Camera  
 I2C CH1 : HDMI EDED  
 I2C CH2 : Touch  
 PMIC\_I2C : PMIC



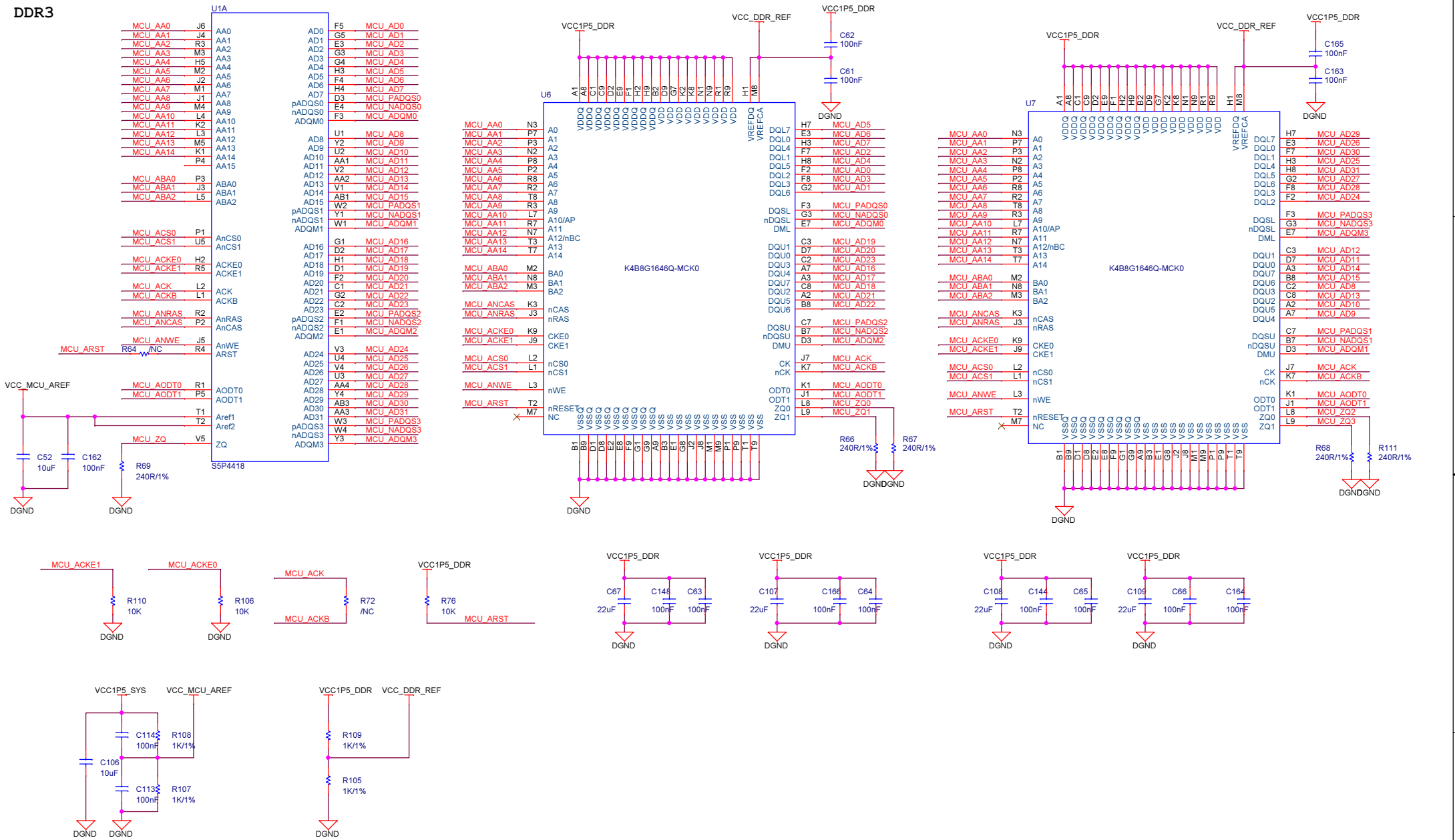
NanoPi M2		
Size A3	Document Number 04.AP Peripherals	Rev 1602
Date: Thursday, February 25, 2016	Sheet 4	of 14



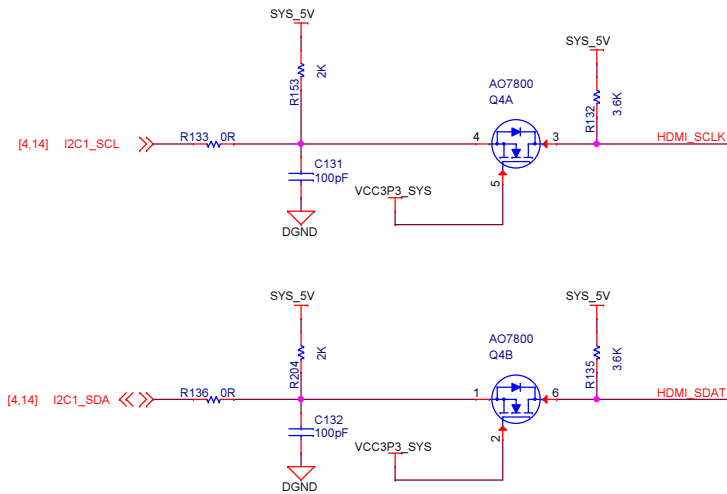
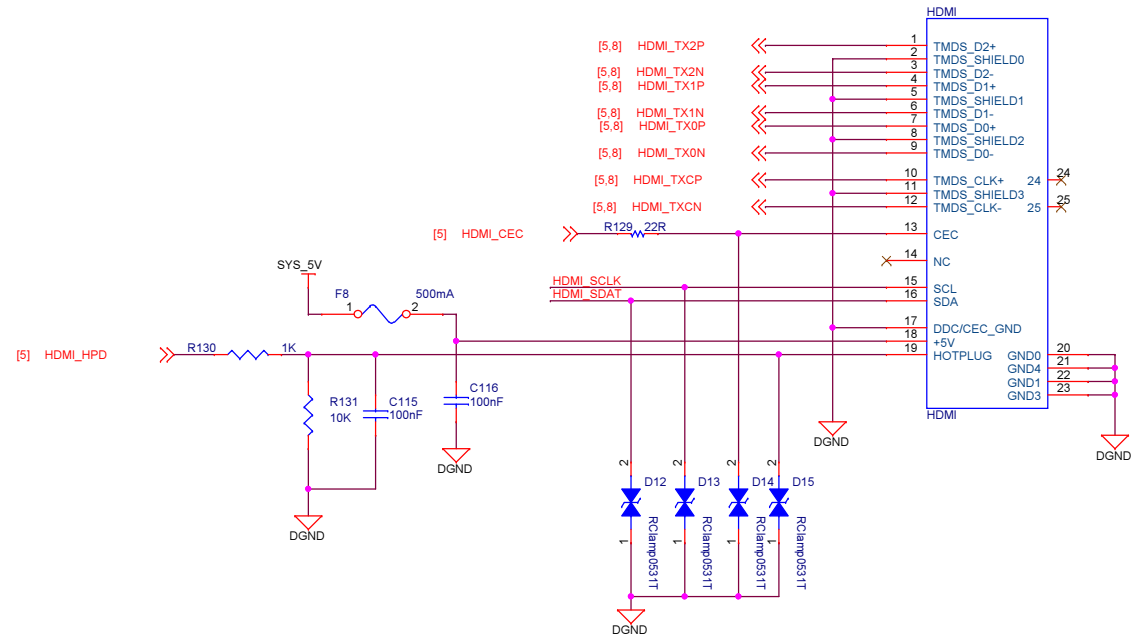
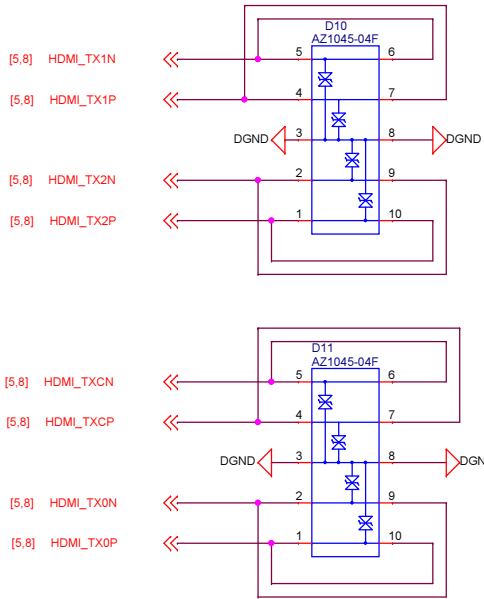
# AP Power



DDR3



# HDMI

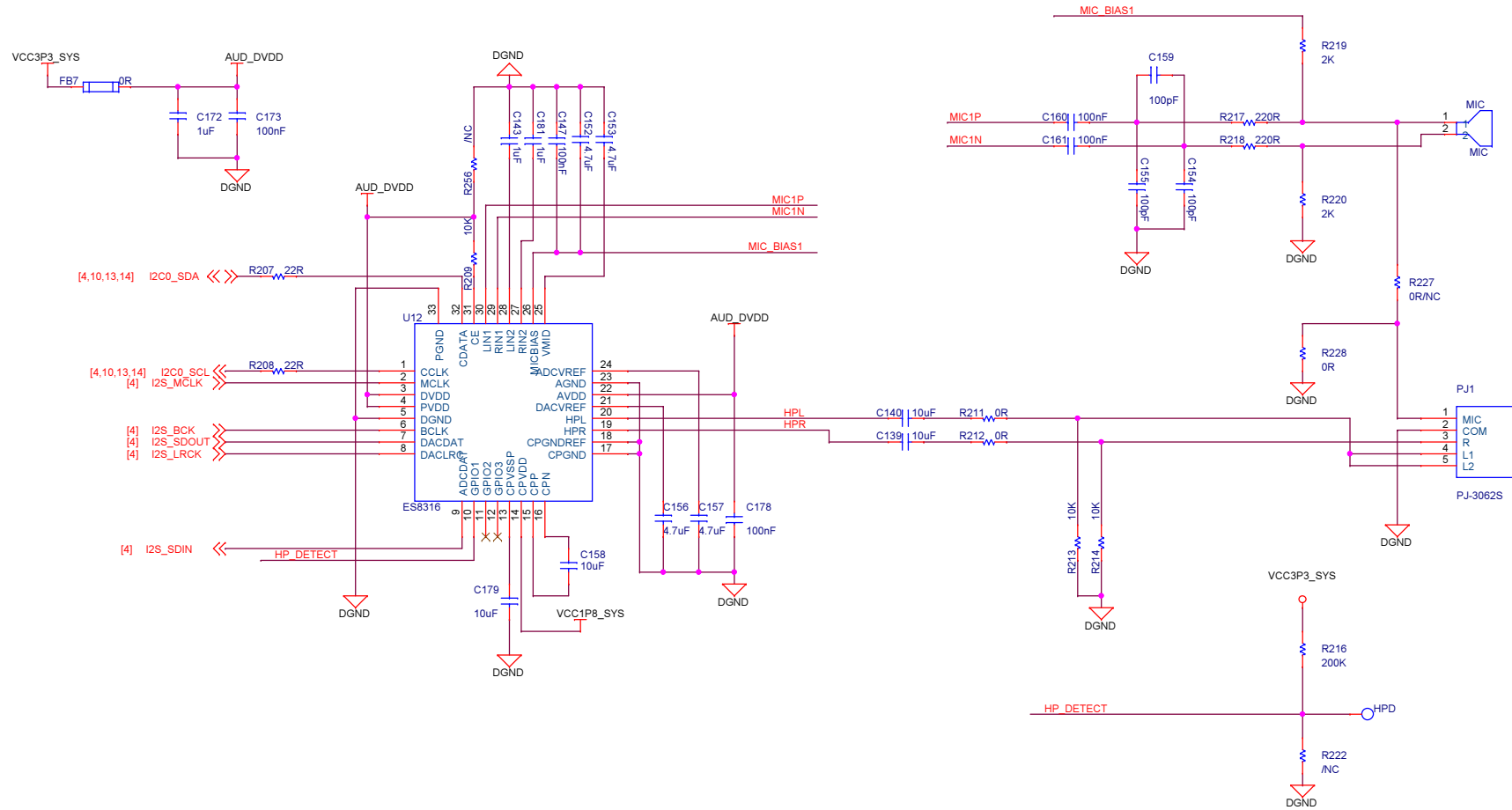


**FRIENDLYARM**

NanoPi M2		
Size A3	Document Number 09.HDMI	Rev 1602
Date: Thursday, February 25, 2016	Sheet 8	of 14



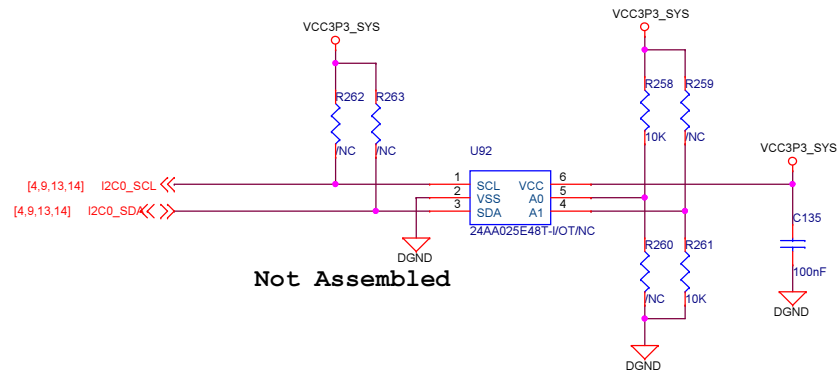
# Audio



FRIENDLYARM

NanoPi M2		
Size A3	Document Number 12.Audio	Rev 1602
Date: Thursday, February 25, 2016	Sheet 9	of 14

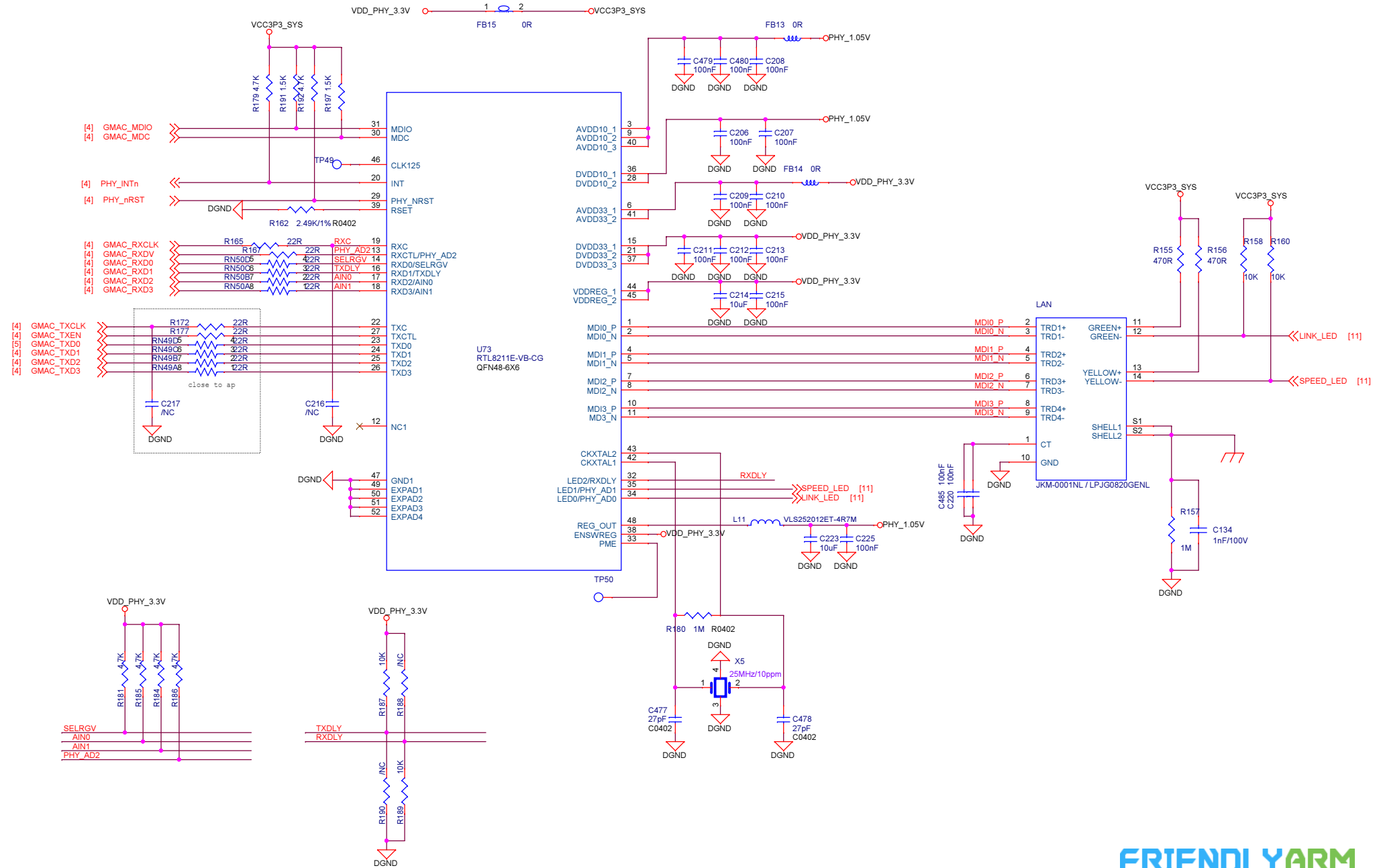
### EEPROM with MAC Address



FRIENDLYARM

NanoPi M2		
Size	Document Number	Rev
A3	11.EEPROM, SHA-256, Holes	1602
Date:	Thursday, February 25, 2016	Sheet 10 of 14

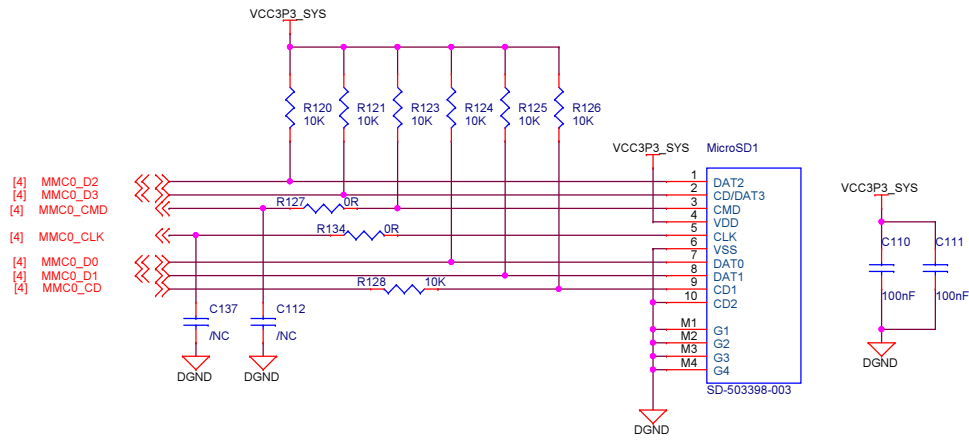
# 10/100/1000M Ethernet



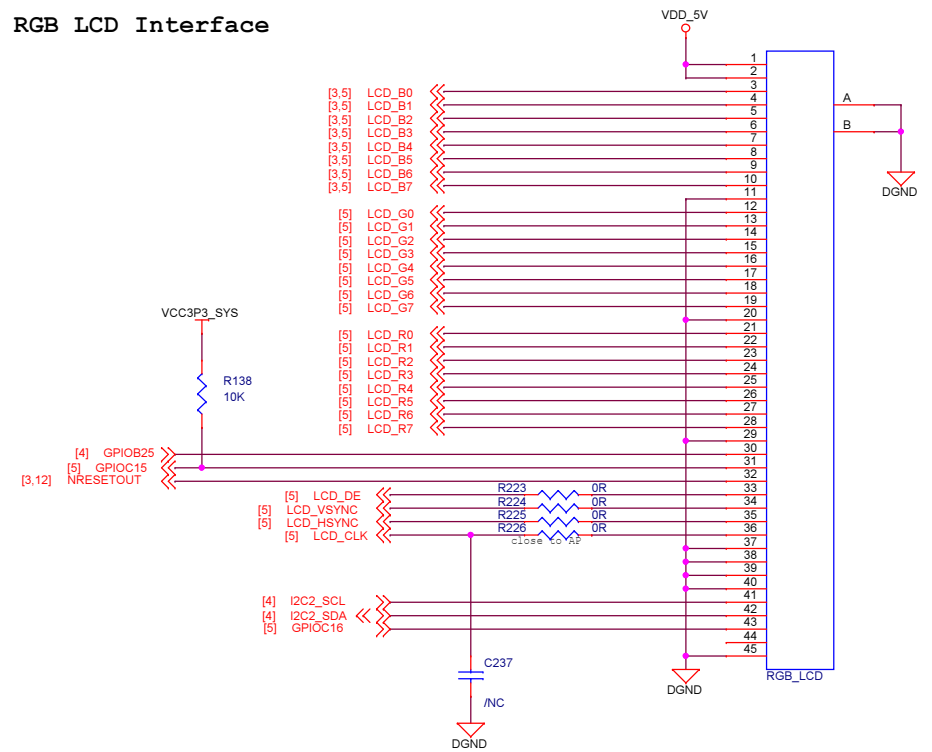
NanoPi M2		
Size A3	Document Number 14.LAN	Rev 1602
Date: Thursday, February 25, 2016	Sheet 11	of 14



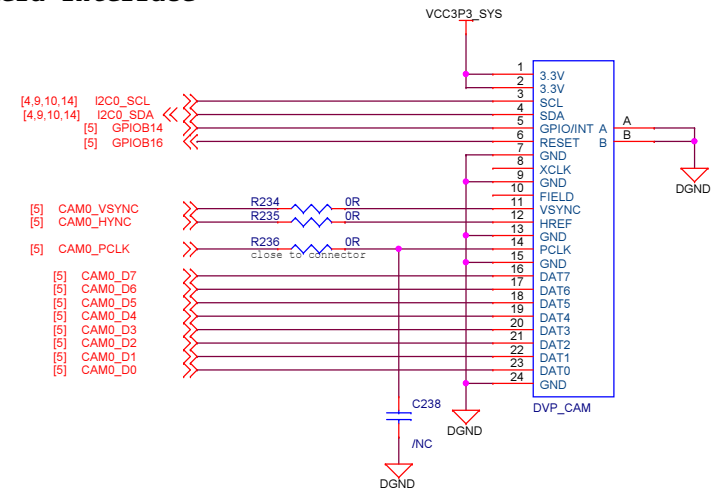
## SDCARD



## RGB LCD Interface

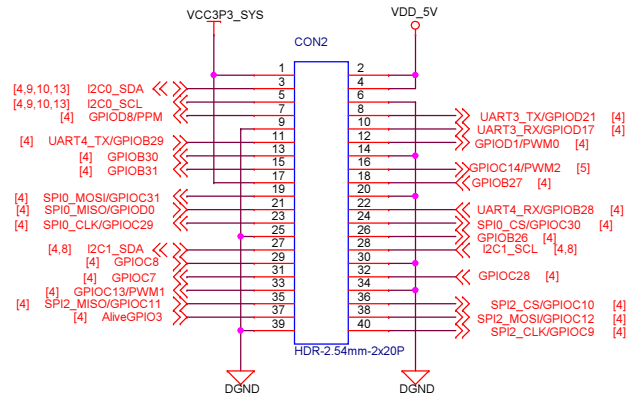


## Camera Interface

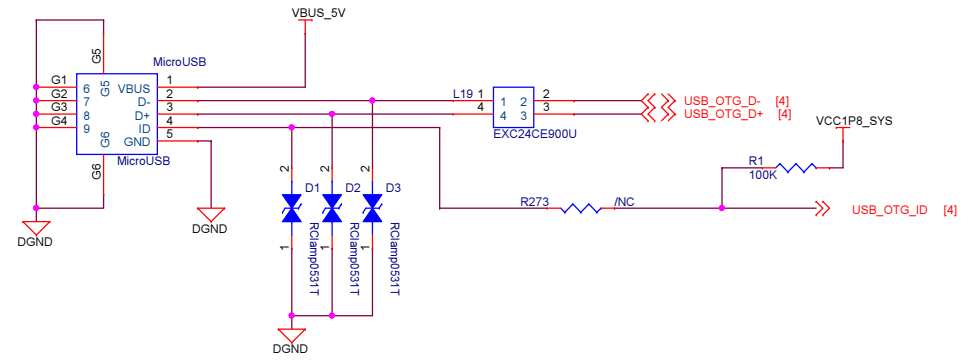


**FRIENDLYARM**

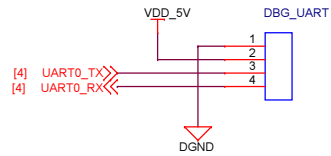
## 2.54mm Header



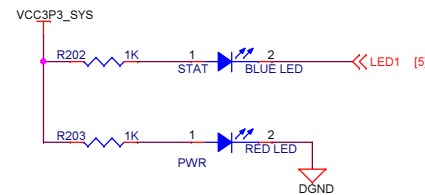
## MicroUSB



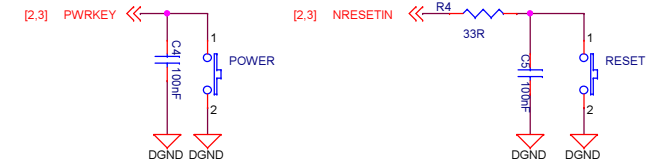
## Debug UART



## LEDs



## Buttons



**FRIENDLYARM**

NanoPi M2		
Size A3	Document Number 16.Header,USB,LEDs,Buttons,LVDS	Rev 1602
Date: Thursday, February 25, 2016	Sheet 14	of 14