

NanoPi M1

Revision

1603 , First Release

1603B, 1.Change IR reciver to VS1838B

2.Change DC/DC

3.Remove RTC OSC

4.etc

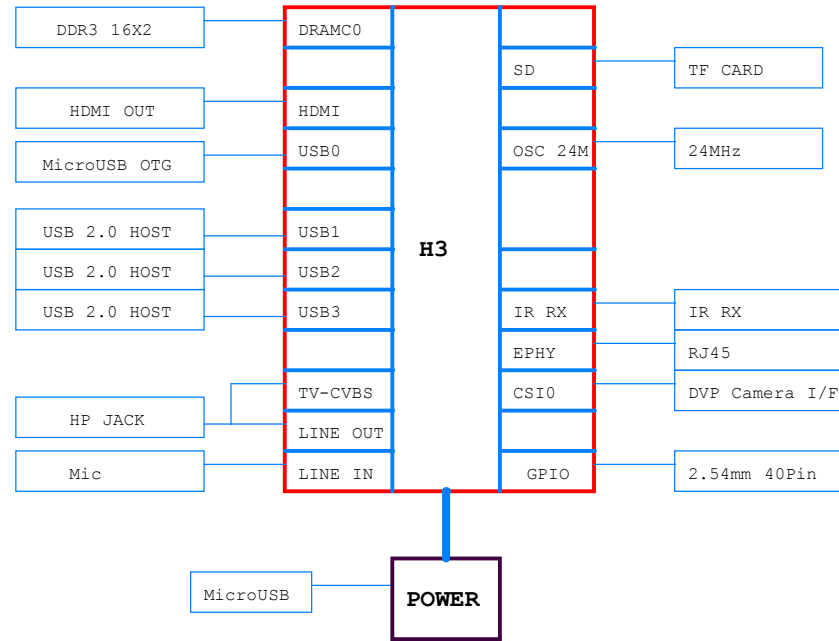
2017/05/18 reneme net PWM1/GPIOA6 to GPIOA6

2018/04/02 Change DC-DC U25, Add Reset IC U2

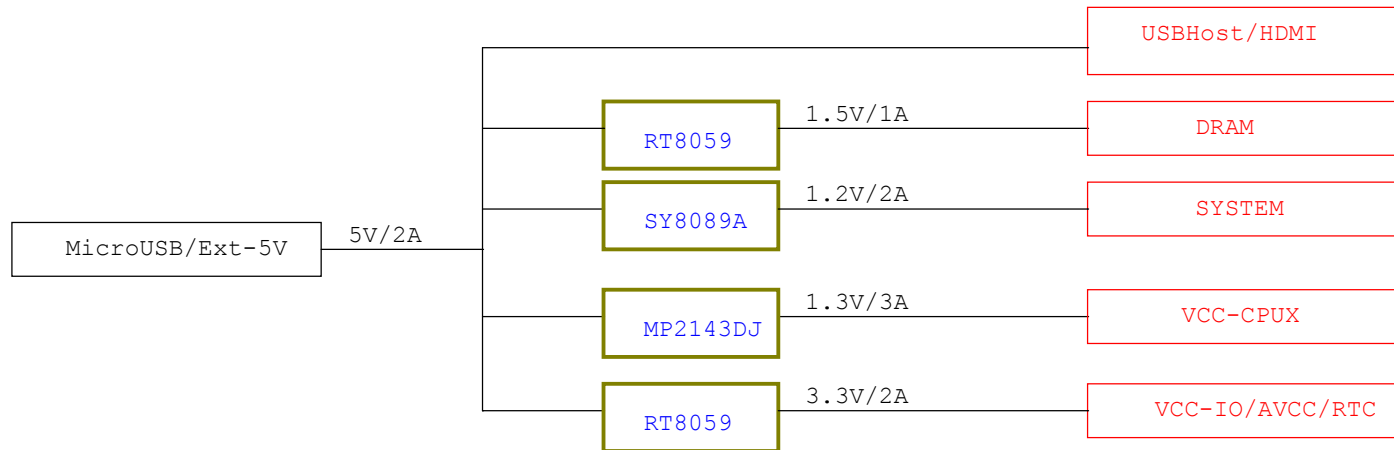


NanoPi M1		
Size A3	Document Number Title	Rev V1.1 1804
Date: Thursday, May 10, 2018	Sheet 1	of 12

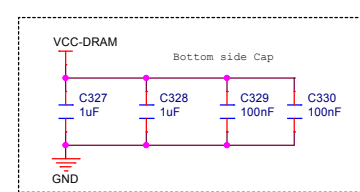
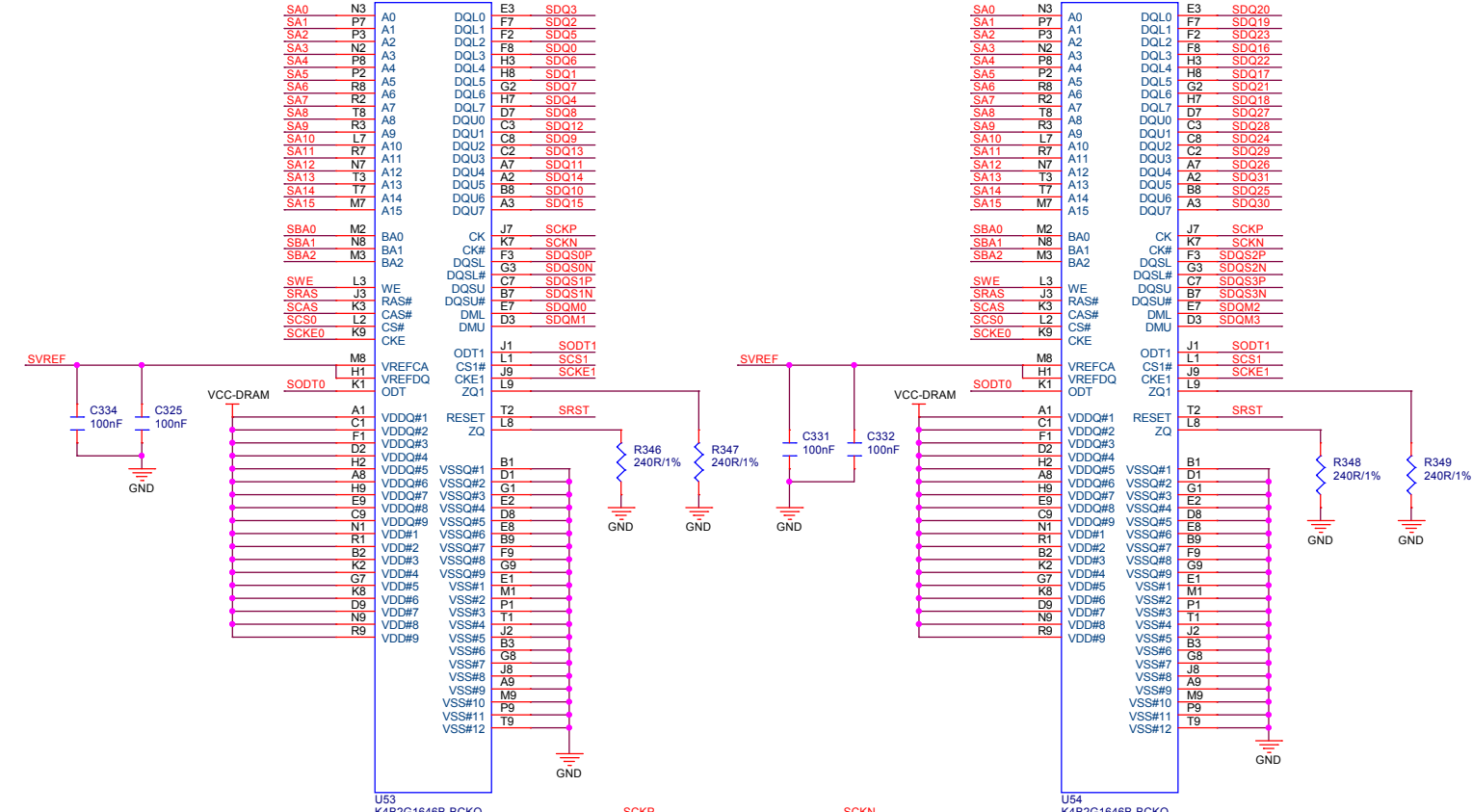
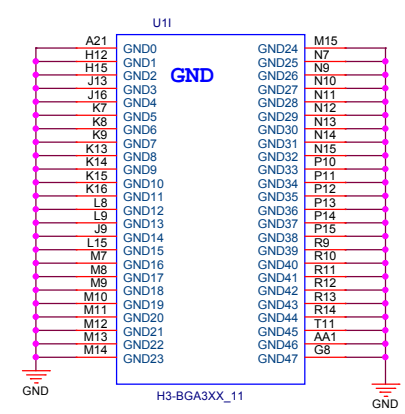
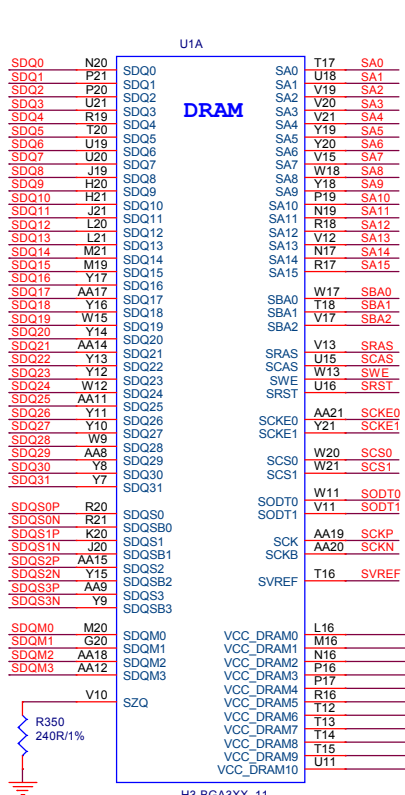
BLOCK



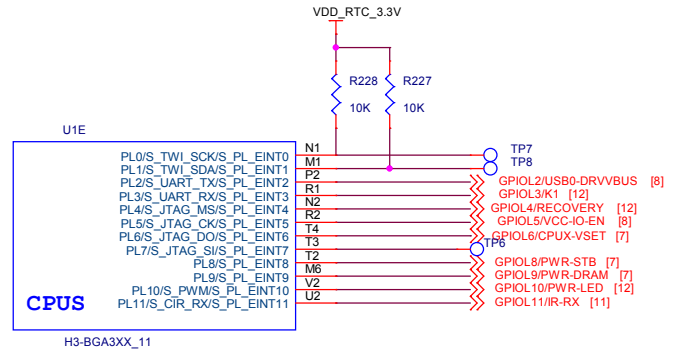
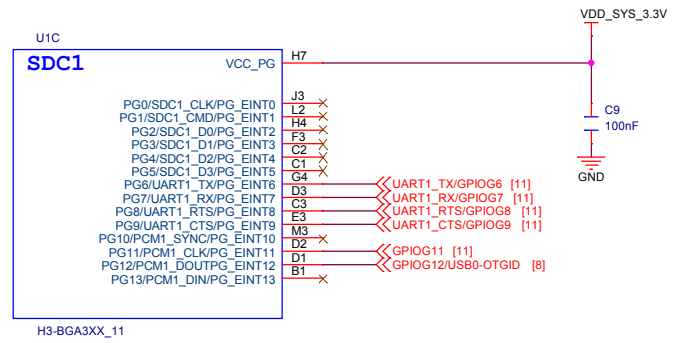
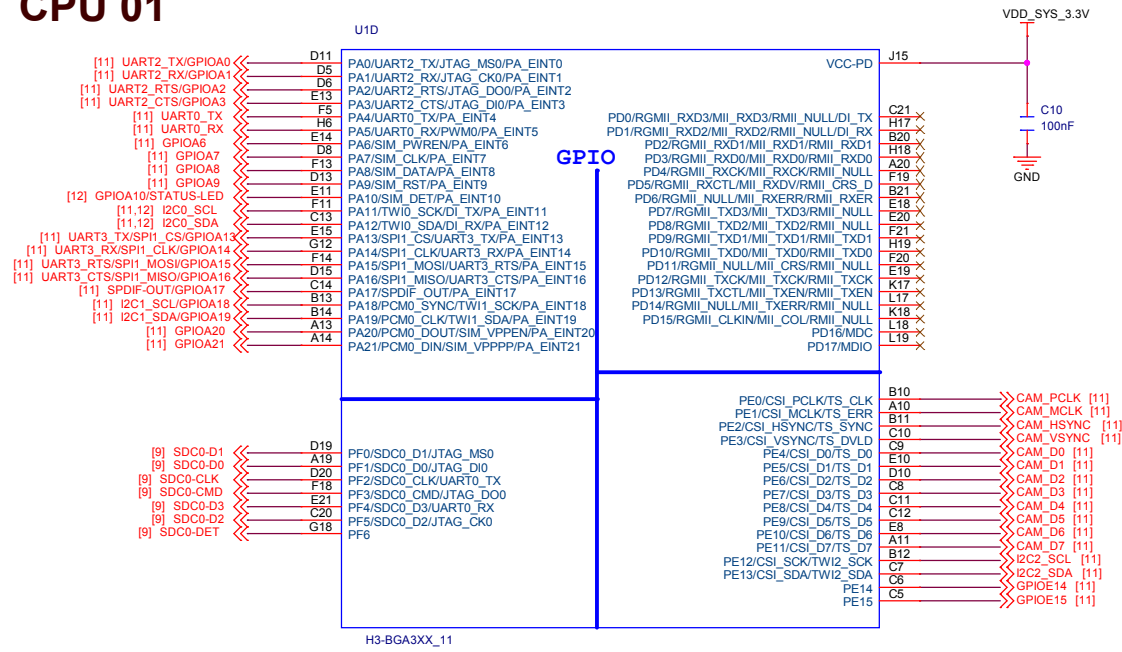
POWER TREE



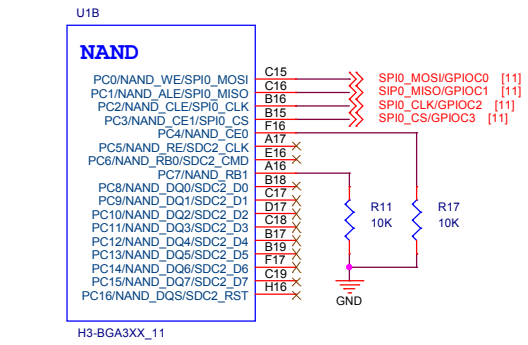
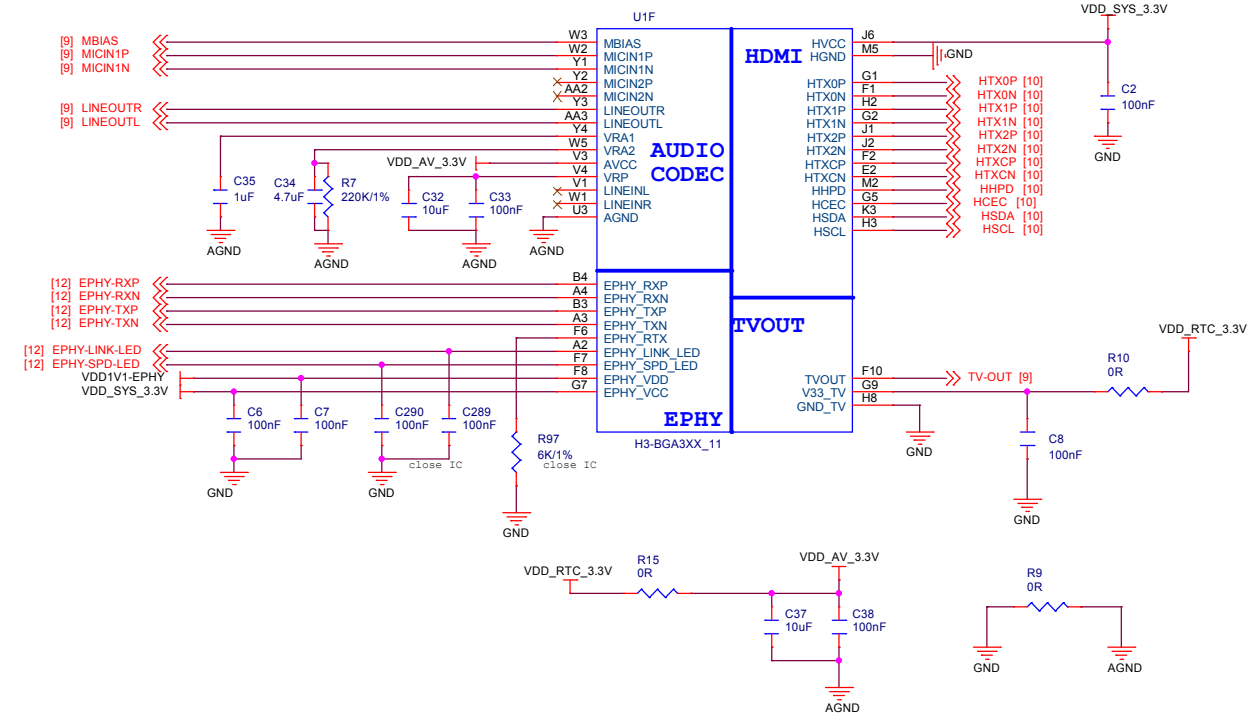
DDR3 16x2



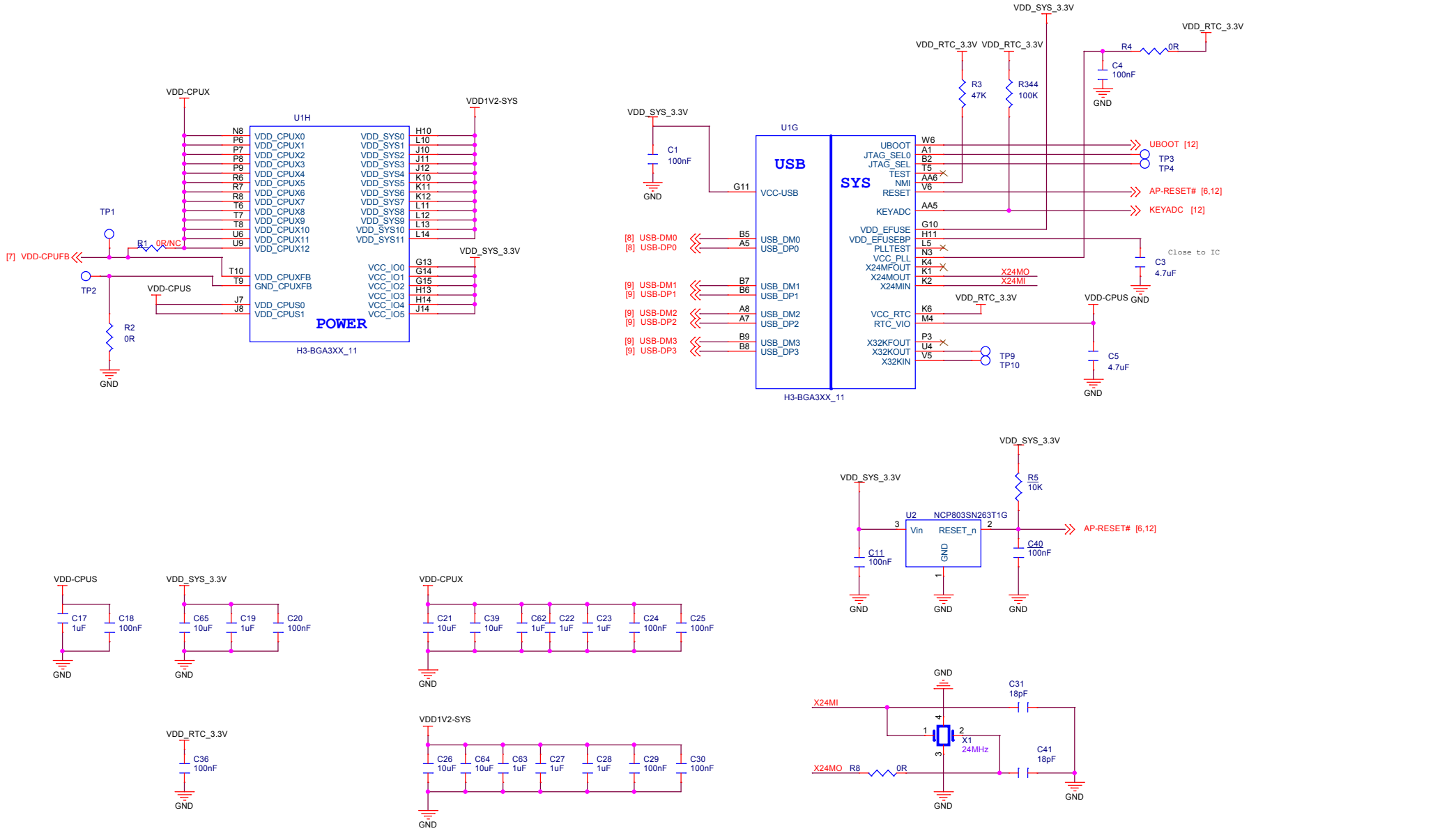
CPU 01



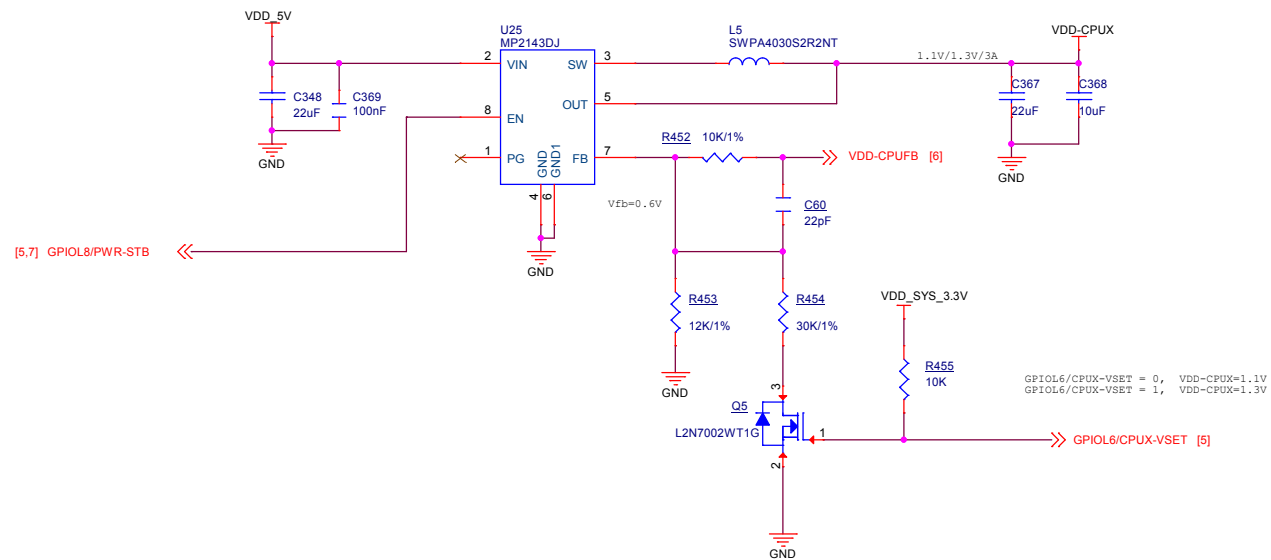
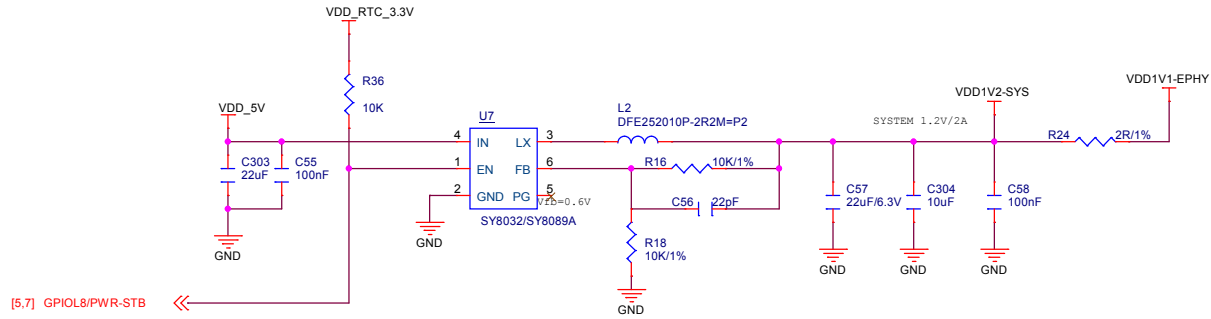
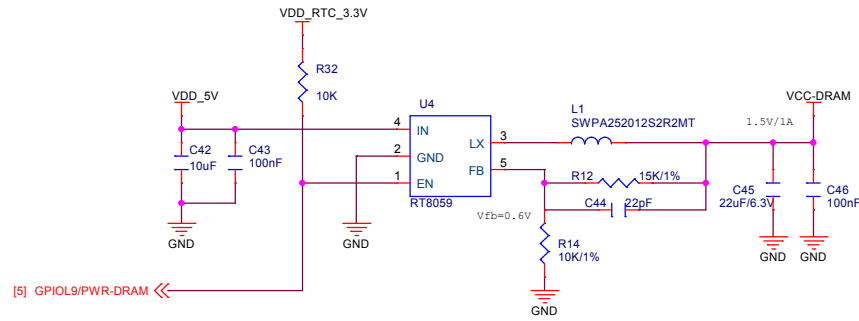
	PWRON/WORK	STANDBY	PWROFF
PWR-STB	1	0	0
PWR-DRAM	1	1	0



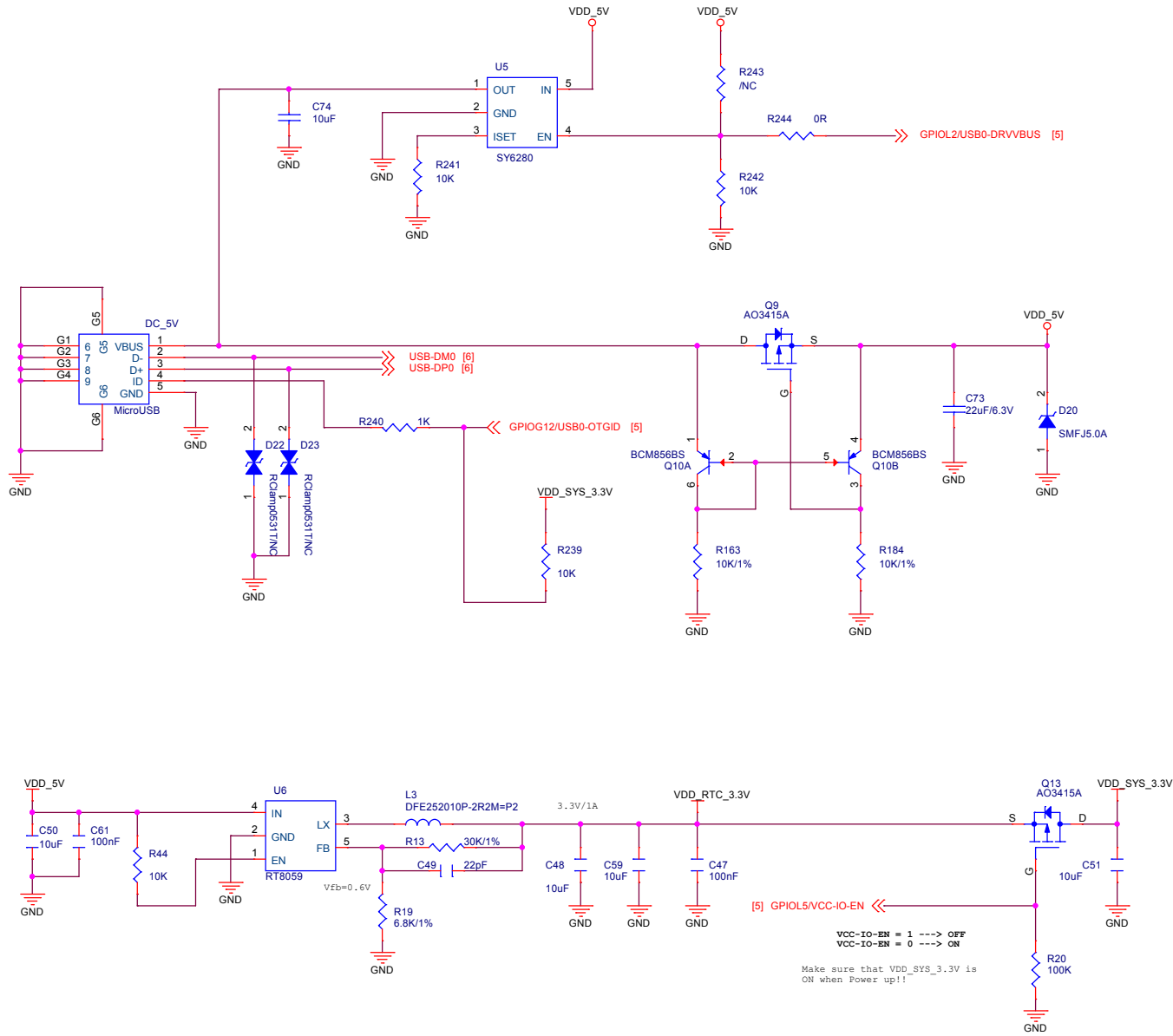
CPU 02



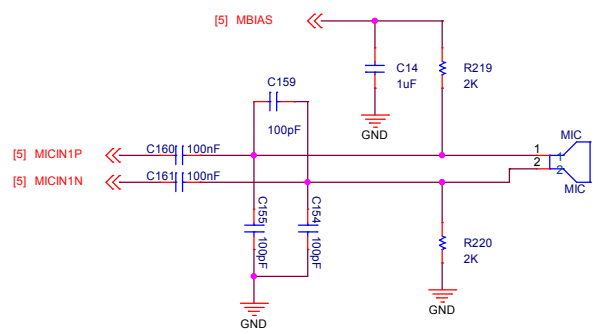
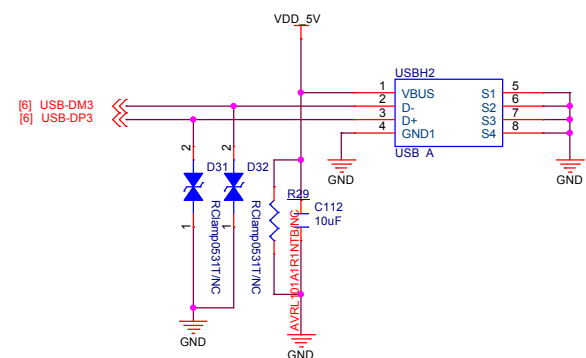
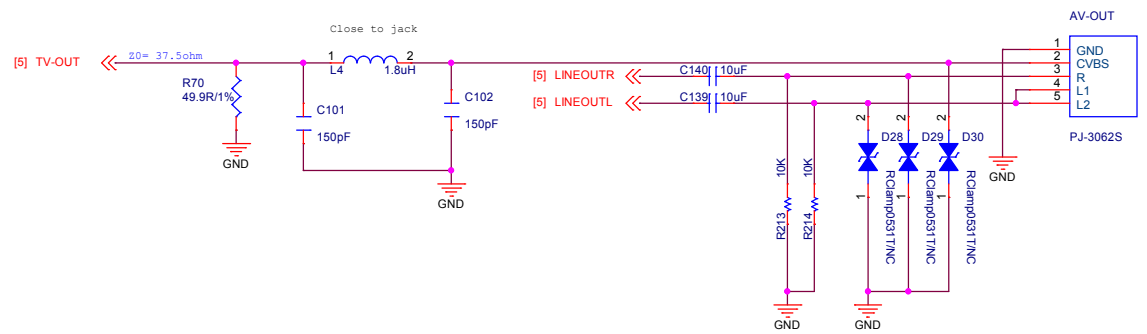
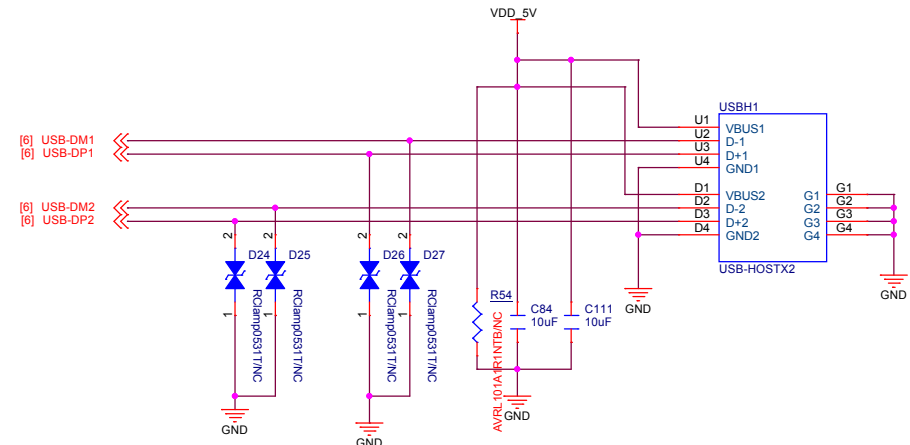
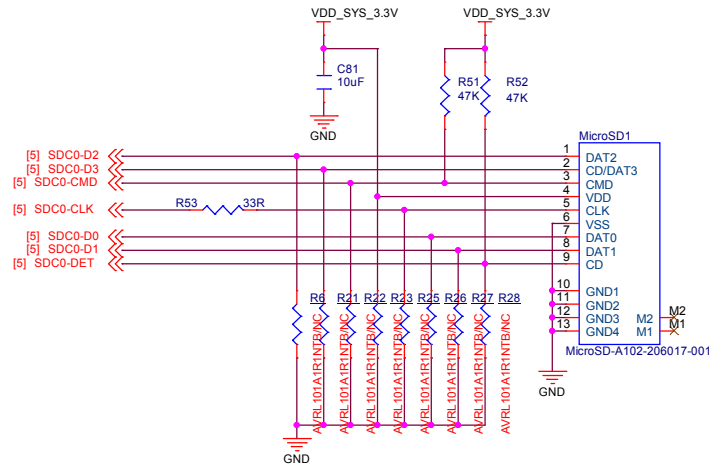
POWER 01



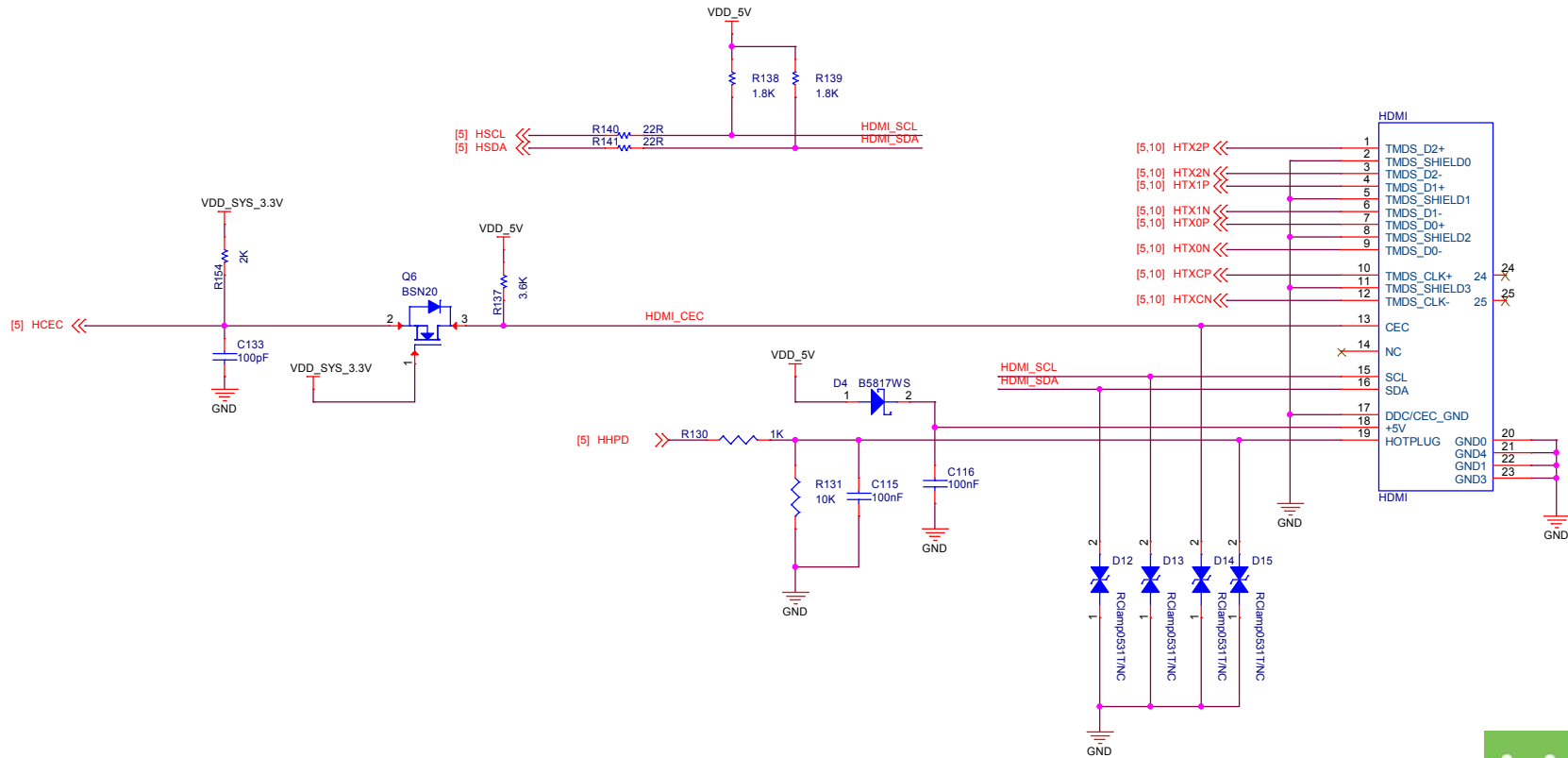
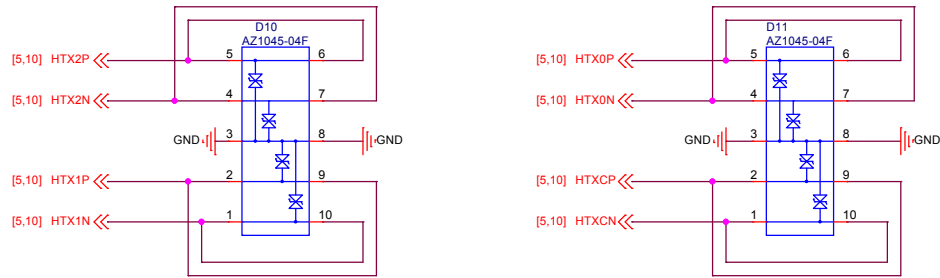
POWER 02



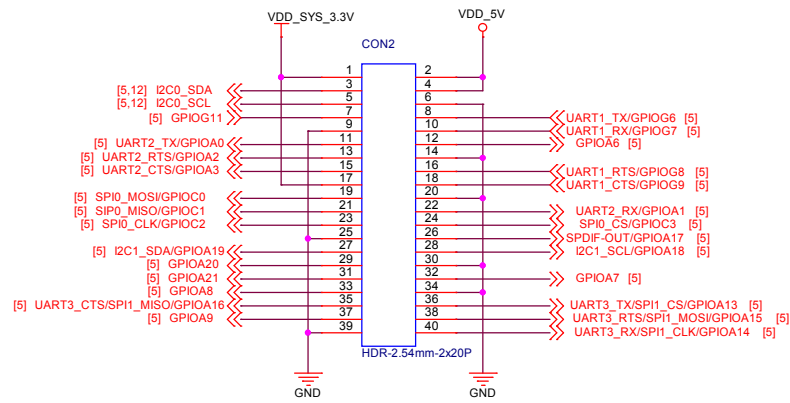
TF,USB Host, AV



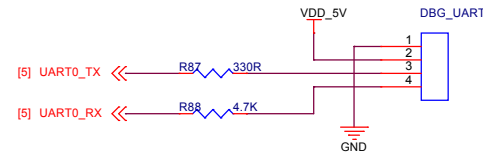
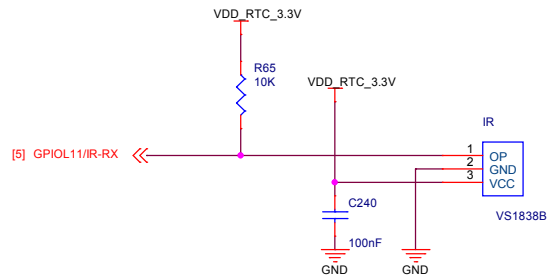
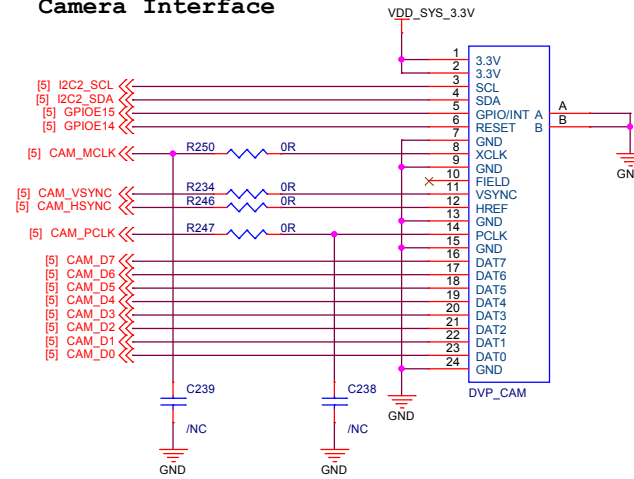
HDMI



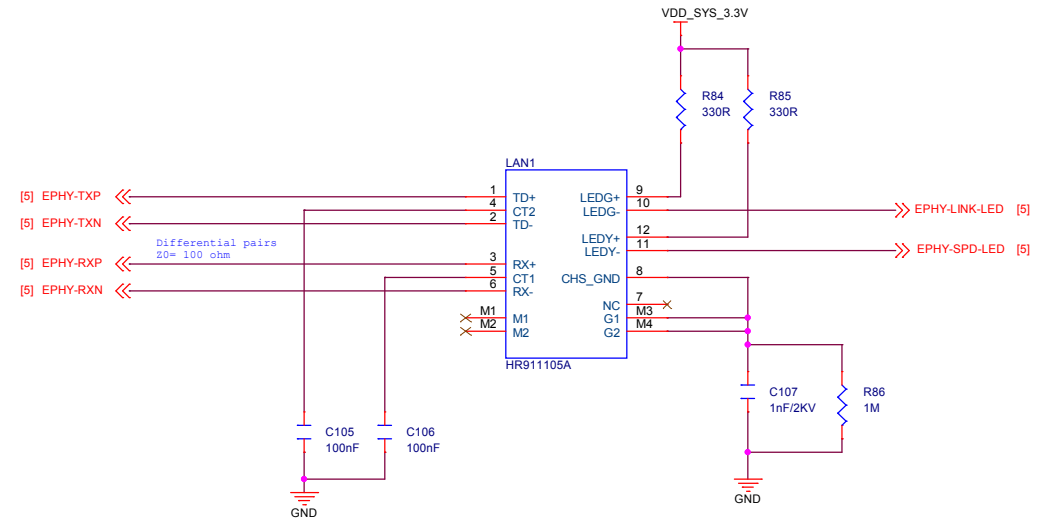
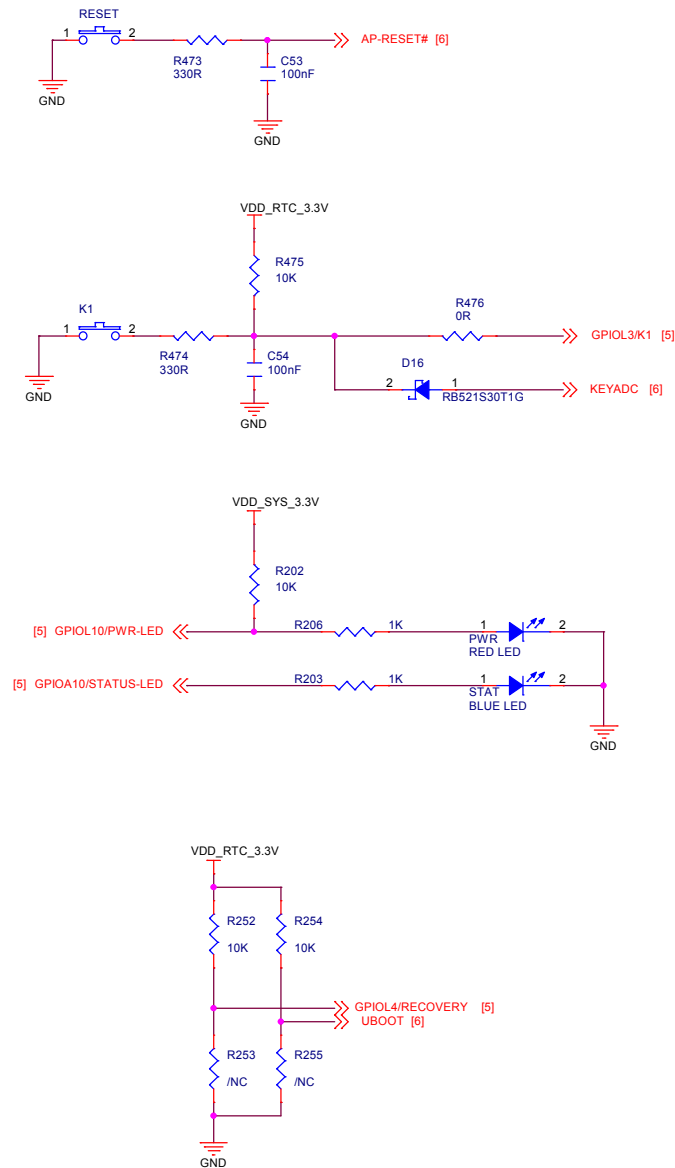
GPIO, CAM, IR



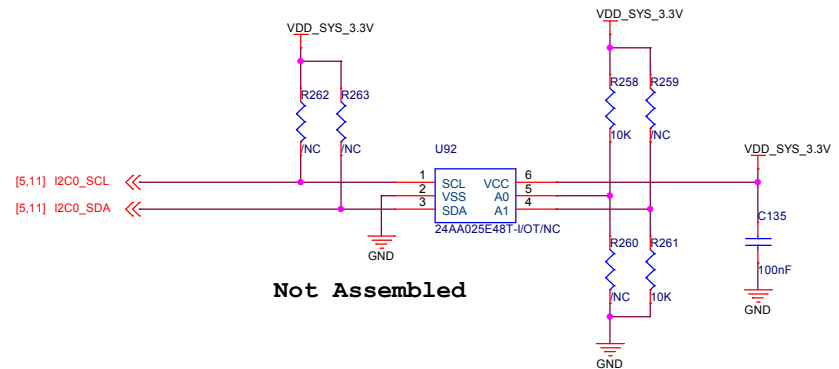
Camera Interface



LEDs, LAN, Keys



EEPROM with MAC Address



Not Assembled

